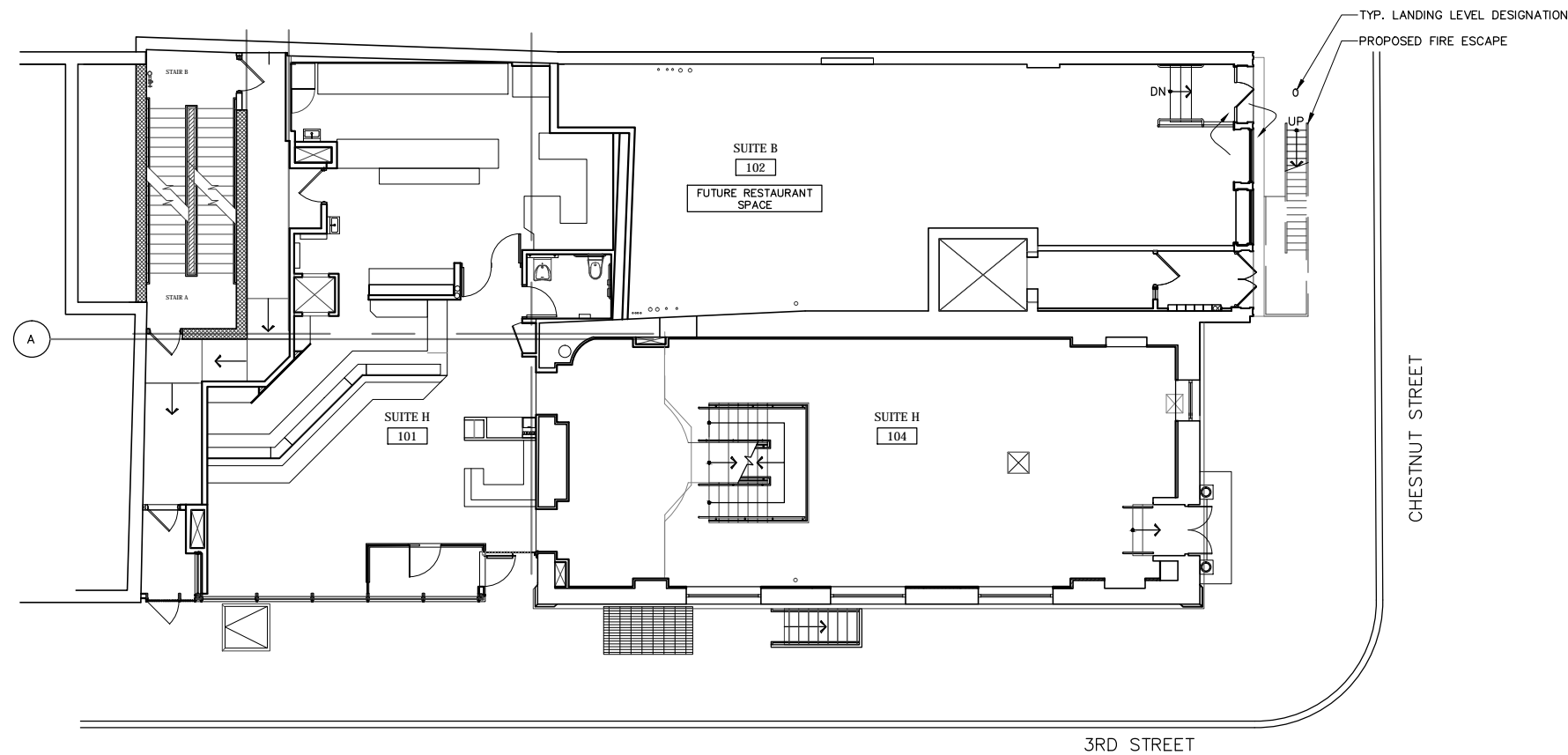
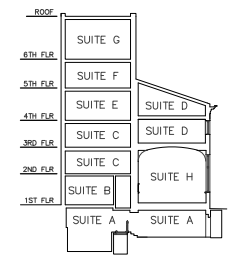
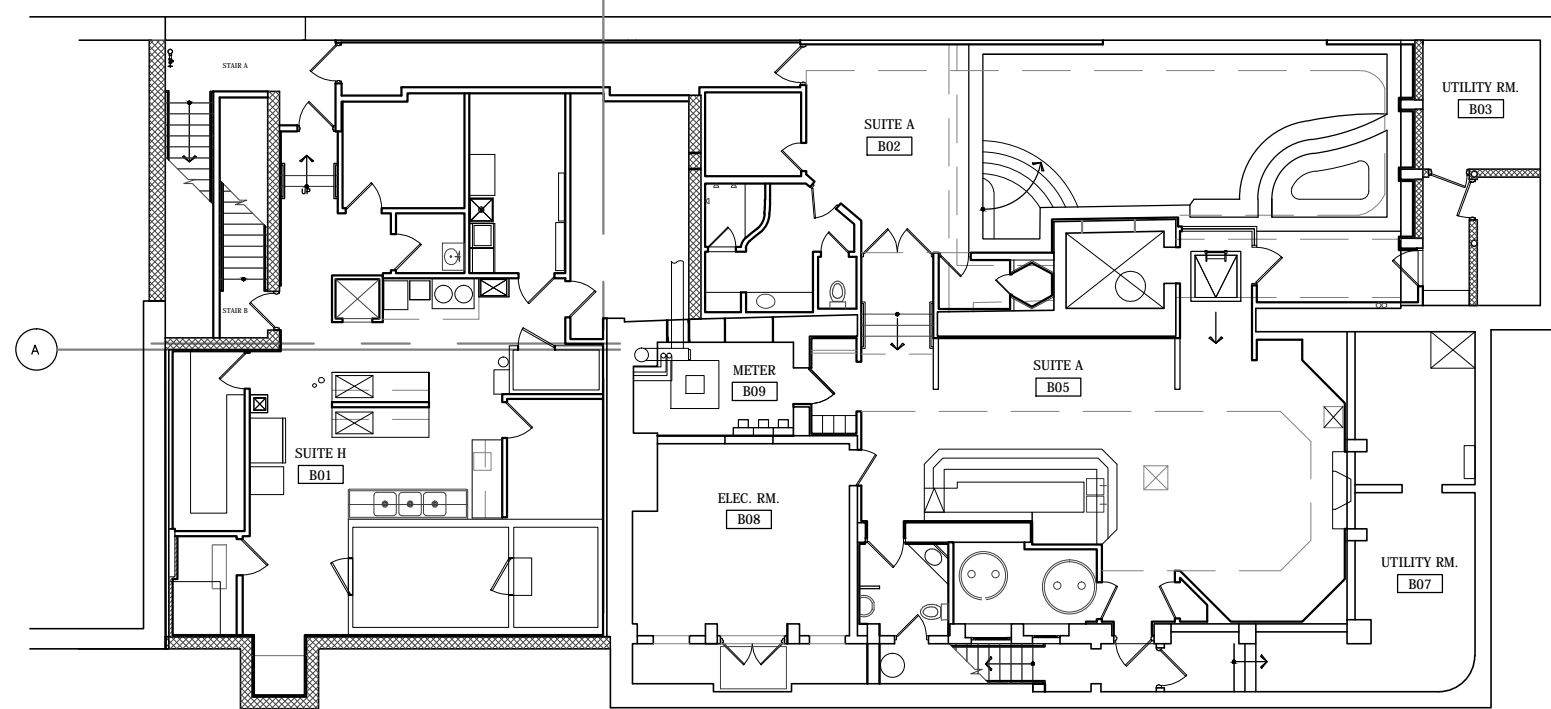


SECTION KEY MAP



**2 OVERALL FIRST FLOOR PLAN**  
A0.1 SCALE: 1/16"=1'-0"



**1 OVERALL BASEMENT PLAN PLAN**  
A0.1 SCALE: 1/16"=1'-0"

**GENERAL INFORMATION**

- A. 241-243 CHESTNUT STREET PREVIOUSLY SHARED A FIRE ESCAPE WITH 239 CHESTNUT STREET. 239 CHESTNUT WAS TORN DOWN AFTER A FIRE LEAVING THE SHARED FIRE ESCAPE UNUSABLE.
- B. THESE DRAWINGS ARE FOR REVIEW OF A PROPOSED FIRE ESCAPE THAT WILL BE LOCATED ENTIRELY WITHIN 241 CHESTNUT STREET'S FACADE. INTERIOR PARTITIONS ARE SHOWN ONLY FOR CONTEXT.
- C. INTERIOR PARTITIONS OF 241-243 CHESTNUT ARE CURRENTLY BEING DEMOLISHED UNDER A SEPARATE APPLICATION (APP# 897478) TO REMEDIATE MOLD, SMOKE AND WATER DAMAGE FROM THE FIRE. EXISTING LAYOUT IS SHOWN FOR CONTEXT.

NOTE: SEE PARTIAL PLANS FOR FIRE ESCAPE DIMENSIONS

PROJECT NAME:  
**PROPOSED FIRE ESCAPE AT:**  
241-243 CHESTNUT STREET  
PHILADELPHIA, PA 19106

OVERALL PLANS

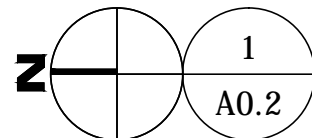
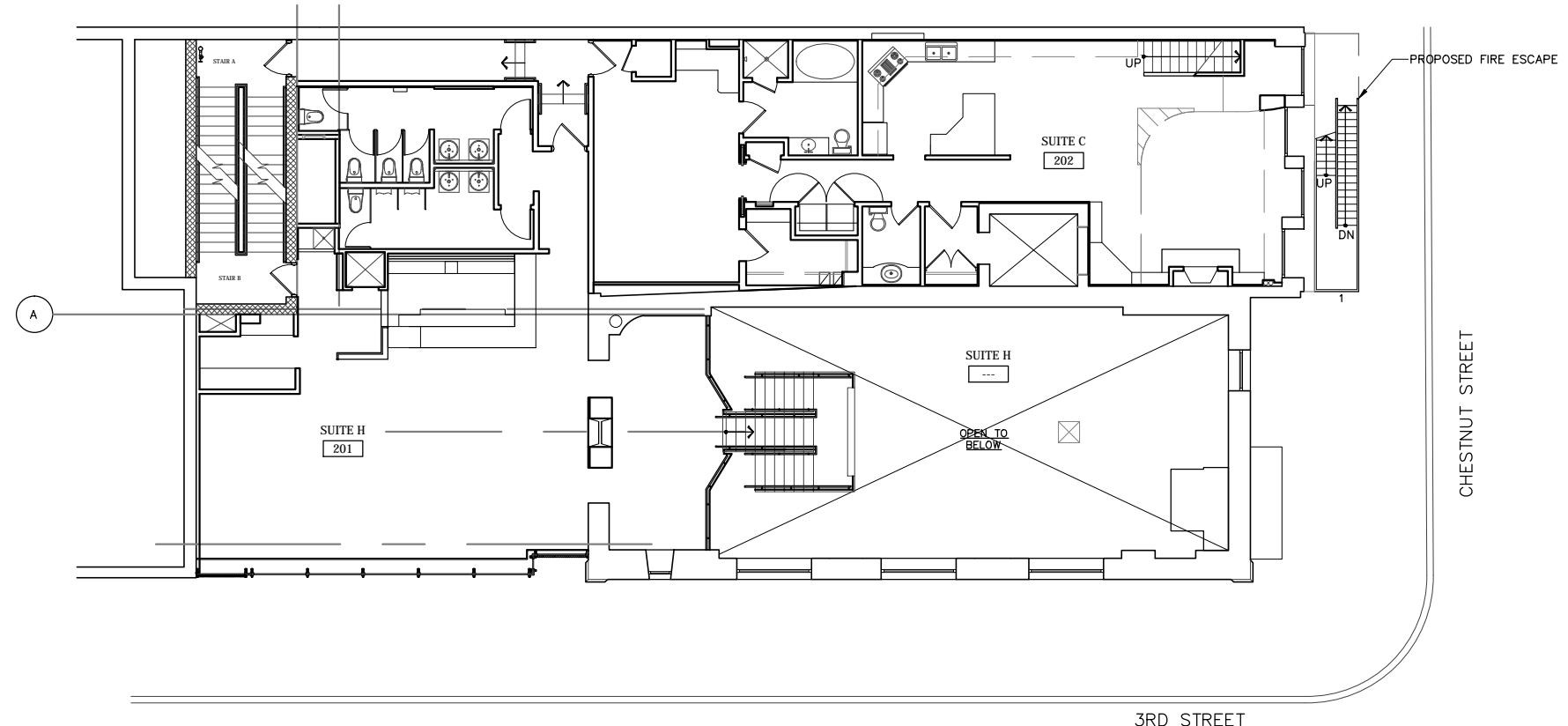
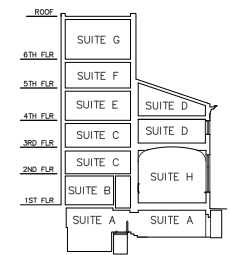
DATE: 10-03-18

PROJECT NO: 1810

SKETCH NO:

**A0.1**

SECTION KEY MAP



**OVERALL SECOND FLOOR PLAN**

SCALE: 1/16"=1'-0"

**GENERAL INFORMATION**

A. 241-243 CHESTNUT STREET PREVIOUSLY SHARED A FIRE ESCAPE WITH 239 CHESTNUT STREET. 239 CHESTNUT WAS TORN DOWN AFTER A FIRE LEAVING THE SHARED FIRE ESCAPE UNUSABLE.

B. THESE DRAWINGS ARE FOR REVIEW OF A PROPOSED FIRE ESCAPE THAT WILL BE LOCATED ENTIRELY WITHIN 241 CHESTNUT STREET'S FACADE. INTERIOR PARTITIONS ARE SHOWN ONLY FOR CONTEXT.

C. INTERIOR PARTITIONS OF 241-243 CHESTNUT ARE CURRENTLY BEING DEMOLISHED UNDER A SEPARATE APPLICATION (APP# 897478) TO REMEDIATE MOLD, SMOKE AND WATER DAMAGE FROM THE FIRE. EXISTING LAYOUT IS SHOWN FOR CONTEXT.

NOTE: SEE PARTIAL PLANS FOR FIRE ESCAPE DIMENSIONS

PROJECT NAME:  
**PROPOSED FIRE ESCAPE AT:**  
241-243 CHESTNUT STREET  
PHILADELPHIA, PA 19106

OVERALL PLANS

DATE: 10-03-18

PROJECT NO: 1810

SKETCH NO:

**A0.2**